

A woman is seated on a dark wooden chair, facing left in profile. She is wearing a strapless, floor-length wedding dress with intricate lace and floral appliques. A long, sheer veil flows from her hair down to the floor. She is barefoot. The background is a soft, neutral-toned studio backdrop.

SOTTERO<sup>AND</sup> MIDGLEY<sup>®</sup>

*Spring 2026*  
COLLECTION

# SOTTERO<sup>AND</sup> MIDGLEY<sup>®</sup>



26SS483A01, DW  
Size 6

Adair 26SS483A01





26SS483A01, DW  
Size 6



26SS483A01, DW  
Size 6



26SS483A01, DW  
Size 6

## Adair 26SS483A01

### COLORS

- All Diamond White

### HIGHLIGHTS

- Leviss stretch satin (Waterless, CO2-dyed fabric)
- Exaggerated dropped waist with pleating
- Strapless soft scoop neckline
- Kahili recycled content lining (100% recycled polyester)
- Lace-up corset closure
- Gown with corset closure photographed with separate petticoat

### SIZES: 0-28

### PERSONALIZATION OPTIONS & PRICING

26SS483A01 (Lace-up)
26SS483B01 (Zip-up)

# SOTTERO<sup>AND</sup> MIDGLEY<sup>®</sup>



26SB416A01, IV  
Bustier: BT026SB416000, IV  
Train: DT026SB416000, IV  
Cap-sleeves (Wesley): CS025SB876000, IV  
Size 6

Akari 26SB416A01



## Akari 26SB416A01

### COLORS

- All Ivory gown with Ivory Illusion

### HIGHLIGHTS

- 3-D flower with pearl accents over Chantilly lace
- Sheer bodice with exposed boning detail with basque waist
- Strapless sweetheart neckline
- Lined with Rosario crepe back satin
- Zipper closure with covered buttons trailing to the hem

SIZES: 0-28

### PERSONALIZATION OPTIONS & PRICING

26SB416A01 (Unlined bodice)
26SB416B01 (Fully lined bodice)

### ACCESSORIES PRICING

BT026SB416000 (Bustier, Zip-up)
BTA26SB416000 (Bustier, Lace-up)
DT026SB416000 (Train)
CS025SB876000 (Wesley) (Cap-sleeves)



# SOTTERO<sup>AND</sup> MIDGLEY<sup>®</sup>



FEATURING  
**INNER  
SHAPEWEAR  
CORSET**  
—  
SLENDERIZING  
FIT



26SS410A01, MLT PNK CH/DW  
Cap-sleeves: CS026SS410000, MLT/DW  
Veil: VL026SS410000, MLT  
Size 6

Alvarez 26SS410A01



## Alvarez 26SS410A01

### COLORS

- All Diamond White gown with Diamond White Illusion
- Multi over Pink Champagne gown with Diamond White Illusion

### HIGHLIGHTS

- Soleil organza
- Unembellished lace motifs accent the bodice and hem
- Plunging illusion V-neckline
- Lined with Kahili recycled content lining (100% recycled polyester)
- Zipper and inner shapewear corset closure with covered buttons trailing to the hem
- Lined with Elin stretch Mikado
- Tulle pockets

**SIZES:** 0-28

### PERSONALIZATION OPTIONS & PRICING

26SS410A01
------------

### ACCESSORIES PRICING

CS026SS410000 (Cap-sleeves)
VL026SS410000 (Royal veil)



# SOTTERO<sup>AND</sup> MIDGLEY<sup>®</sup>



26SZ476A01, IV SBLS/IV  
Size 6

Angelica 26SZ476A01





## Angelica 26SZ476A01

### COLORS

- All Ivory gown with Ivory Illusion
- Ivory over Soft Blush gown with Ivory Illusion

### HIGHLIGHTS

- Beaded and sequined lace
- Illusion bodice with drop waist
- Plunging illusion sweetheart neckline with pearl accents
- Lined with Kahili recycled content lining (100% recycled polyester)  
All Ivory only
- Zipper closure with covered buttons trailing to the hem

**SIZES:** 0-28

### PERSONALIZATION OPTIONS & PRICING

26SZ476A01 (Unlined bodice)
26SZ476B01 (Fully lined bodice)

### ACCESSORIES PRICING

DS026SZ476000 (Sleeves)
JK026SZ476000 (Jacket)

# SOTTERO<sup>AND</sup> MIDGLEY<sup>®</sup>



Burke 26SS371A01





Burke 26SS371A01

COLORS

- All Ivory gown with Ivory Illusion
- Ivory/Silver Accent gown with Ivory Illusion

HIGHLIGHTS

- Cartago satin
- Asymmetrically draped front bodice with beaded and sequin 3-D lace motifs and side illusion cutouts
- Cat eye neckline
- Soft sweetheart back neckline
- Lined with Kahili recycled content lining (100% recycled polyester)
- Zipper closure with covered buttons trailing to the hem
- Beaded and sequin lace motifs accent the train

SIZES: 0-28

PERSONALIZATION OPTIONS & PRICING

26SS371A01 (Unlined cutouts)
26SS371B01 (Lined cutouts)

ACCESSORIES PRICING

CH026SS371000 (Choker)
CS026SS371000 (Cap-sleeves)
JK026SS371000 (Jacket)
VL026SS371000 (Royal veil)

# SOTTERO<sup>AND</sup> MIDGLEY<sup>®</sup>



FEATURING  
**JERSEY  
LINING**

LIGHTWEIGHT  
AND  
COMFORTABLE

26SS378A01, IV SND/CH  
Veil: VL026SS378000, IV  
Size 6

Cooper 26SS378A01





## Cooper 26SS378A01

### COLORS

- Ivory gown with Ivory Illusion
- Ivory over Soft Nude gown with Champagne Illusion

### HIGHLIGHTS

- Glitter tulle embellished with pearls
- Sheer organza lined front bodice with illusion hip dips
- Plunging illusion V-neckline
- Plunging illusion V-back with glitter tulle corset boning detail
- Glitter tulle tank straps accented with pearls
- Lined with Jenday stretch jersey for comfort
- Zipper closure with pearl buttons trailing to the hem
- Horsehair hem

SIZES: 0-28

### PERSONALIZATION OPTIONS & PRICING

26SS378A01 (Cutouts)
26SS378A11 (No cutouts)

### ACCESSORIES PRICING

DS026SS378000 (Sleeves)
VL026SS378000 (Cathedral veil)

# SOTTERO<sup>AND</sup> MIDGLEY<sup>®</sup>



26SS401A01, IV SLV/LTTE  
Veil (Cooper): VL026SS378000, IV  
Sleeves (Hudson): DS026MS412000, IV  
Size 6

Dmara 26SS401A01





## Dmara 26SS401A01

### COLORS

- All Ivory/Silver Accent gown with Ivory Illusion
- Ivory/Silver Accent gown with Latte Illusion

### HIGHLIGHTS

- Cartago satin
- Sheer organza lined bodice with Chantilly lace accent and embellished with beads, rhinestones, and pearls
- Straight strapless neckline
- Plunging sheer organza lined back bodice
- Detachable 1" beaded shoulder straps included, and sold separately
- Lined with Kahili recycled content lining (100% recycled polyester)
- Zipper closure with crystal buttons trailing to the hem
- Pockets

### SIZES: 0-28

### SISTER STYLES

- Available with a tulle ballgown skirt (Dmara Lane, 26SS401B01)

### PERSONALIZATION OPTIONS & PRICING

26SS401A01
------------

### ACCESSORIES PRICING

SS026SS401000 (Shoulder straps)
VL026SS378000 (Cooper) (Cathedral veil)
DS026MS412000 (Hudson) (Sleeves)

# SOTTERO<sup>AND</sup> MIDGLEY<sup>®</sup>



Dmara Lane 26SS401B01





## Dmara Lane 26SS401B01

### COLORS

- All Ivory/Silver Accent gown with Ivory Illusion
- Ivory/Silver Accent gown with Latte Illusion

### HIGHLIGHTS

- Plain tulle and sparkle tulle
- Sheer organza lined bodice with Chantilly lace accent and embellished with beads, rhinestones, and pearls
- Straight strapless neckline
- Plunging sheer organza lined back bodice
- Detachable 1" beaded shoulder straps included, and sold separately
- Lined with Kahili recycled content lining (100% recycled polyester)
- Zipper closure with crystal buttons trailing to the hem

### SIZES: 0-28

### SISTER STYLES

- Available with a Cartago satin ballgown skirt (Dmara, 26SS401A01)

### PERSONALIZATION OPTIONS & PRICING

26SS401B01 (Sparkle tulle 1)
26SS401B02 (Plain tulle)

### ACCESSORIES PRICING

VL026SS378000 (Cooper) (Cathedral veil)
--

# SOTTERO<sup>AND</sup> MIDGLEY<sup>®</sup>



FEATURING  
**JERSEY  
LINING**

LIGHTWEIGHT  
AND  
COMFORTABLE

26SZ481A01, IV ND/LT ND  
Sleeves: DS026SZ481000, IV/IV  
Size 6

Dublin 26SZ481A01





Dublin 26SZ481A01

COLORS

- All Ivory gown with Ivory Illusion
- Ivory over Nude gown with Light Nude Illusion
- Ivory over Nude gown with Medium Nude Illusion

HIGHLIGHTS

- Beaded Lace motifs over all overlace
- Illusion bodice with basque waist
- Illusion neckline with draping detail
- V-back
- Lined in Virtue stretch jersey for comfort
- Covered button over zipper closure

SIZES: 0-28

PERSONALIZATION OPTIONS & PRICING

26SZ481A01 (Unlined bodice, Glitter tulle)
26SZ481A02 (Unlined bodice, Plain tulle)
26SZ481B01 (Lined front bodice, Glitter tulle)
26SZ481B02 (Lined front bodice, Plain tulle)

ACCESSORIES PRICING

CS026SZ481000 (Cap-sleeves)
DS026SZ481000 (Sleeves)

# SOTTERO<sup>AND</sup> MIDGLEY<sup>®</sup>

FEATURING  
**INNER  
SHAPEWEAR  
CORSET**

—  
SLENDERIZING  
FIT

26SS373A01, IV  
Jacket (Burke): JK026SS371000, IV  
Size 6

Elias 26SS373A01





Elias 26SS373A01

COLORS

- All White
- All Ivory

HIGHLIGHTS

- Cartago satin
- Asymmetrically draped front bodice with a soft basque waist
- Strapless sweetheart neckline
- Soft sweetheart back neckline
- Lined with Rosario crepe back satin
- Zipper with inner shapewear corset closure and covered buttons trailing to the hem
- Pockets

SIZES: 0-28

PERSONALIZATION OPTIONS & PRICING

26SS373A01
------------

ACCESSORIES PRICING

BW026SS373000 (Bow)
CS026SS373000 (Cap-sleeves)
JK026SS371000 (Burke) (Jacket)

# SOTTERO<sup>AND</sup> MIDGLEY<sup>®</sup>



26SB467A01, IV BLS/IV  
Cap-sleeves: CS026SB467000, IV/IV  
Veil: VLDEEXK001000, IV  
Size 6

Granger 26SB467A01





## Granger 26SB467A01

### COLORS

- All Ivory gown with Ivory Illusion
- Ivory over Blush gown with Ivory Illusion

### HIGHLIGHTS

- Unembellished Chantilly lace
- Illusion bodice with Chantilly lace and exposed boning detail
- Deep illusion sweetheart neckline with Chic organza bow detail
- Lined in Rosario crepe back satin
- Covered buttons over zipper closure
- Extended Chantilly lace illusion train

SIZES: 0-28

### PERSONALIZATION OPTIONS & PRICING

26SB467A01 (Unlined bodice)
26SB467B01 (Fully lined bodice)

### ACCESSORIES PRICING

CS026SB467000 (Cap-sleeves)
DS026SB467000 (Sleeves)
VLDEEXK001000 (Cathedral veil)

# SOTTERO<sup>AND</sup> MIDGLEY<sup>®</sup>



26SB432A01, IV/IV  
Size 6

Jayna 26SB432A01





## Jayna 26SB432A01

### COLORS

- All Ivory gown with Ivory Illusion

### HIGHLIGHTS

- Beaded and sequin lace motifs with 3-D flowers on pleated organza over Chantilly lace and glitter tulle
- Illusion bodice with beaded and sequin lace motifs
- Strapless cat eye neckline
- Lined in Rosario crepe back satin
- Covered buttons over zipper closure
- Basque waist

**SIZES:** 0-28

### PERSONALIZATION OPTIONS & PRICING

26SB432A01

### ACCESSORIES PRICING

CS026SB432000  
(Cap-sleeves)

# SOTTERO<sup>AND</sup> MIDGLEY<sup>®</sup>



26SZ459A01, IV SBLS/IV  
Bustier: BT026SZ459000, IV  
Train: DT026SZ459000, IV  
Size 6

Kalinda 26SZ459A01





## Kalinda 26SZ459A01

COLORS

- All Ivory gown with Ivory Illusion
- Ivory over Soft Blush gown with Ivory Illusion

HIGHLIGHTS

- Beaded and sequined lace motifs with 3-D flowers over dotted glitter tulle
- Illusion lace and 3-D flower covered bodice
- Sweetheart neckline
- Lined with Kahili recycled content lining (100% recycled polyester)  
All Ivory only
- Covered button over zipper closure

SIZES: 0-28

PERSONALIZATION OPTIONS & PRICING

26SZ459A01 (Unlined bodice, Dotted glitter tulle)
26SZ459A02 (Unlined bodice, Glitter tulle 3)
26SZ459B01 (Fully lined bodice, Dotted glitter tulle)
26SZ459B02 (Fully lined bodice, Glitter tulle 3)

ACCESSORIES PRICING

BT026SZ459000 (Bustier, Zip-up)
BTA26SZ459000 (Bustier, Lace-up)
CS026SZ459000 (Cap-sleeves)
DT026SZ459000 (Train)
VL026SZ459000 (Cathedral veil)

# SOTTERO<sup>AND</sup> MIDGLEY<sup>®</sup>



Kincaid 26SS414A01





## Kincaid 26SS414A01

COLORS

- All Ivory

HIGHLIGHTS

- Cartago satin
- Asymmetrically draped front bodice with beading and pearl accents
- Strapless cat eye neckline
- Soft sweetheart back neckline
- Lined with Kahili recycled content lining (100% recycled polyester)
- Zipper and inner shapewear corset closure with pearl buttons trailing to the hem
- Attached embellished Cartago satin bow at the back waist
- Pockets
- Thigh high slit

SIZES: 0-28

PERSONALIZATION OPTIONS & PRICING

26SS414A01 (Embellished)
26SS414B01 (Unembellished)

ACCESSORIES PRICING

CS025MS890000 (Melissa) (Cap-sleeves)
--

# SOTTERO<sup>AND</sup> MIDGLEY<sup>®</sup>



26SS453A01, IV  
Veil: VL026SS453000, IV  
Size 6

Lassen 26SS453A01





## Lassen 26SS453A01

### COLORS

- All Ivory

### HIGHLIGHTS

- Unembellished allover Chantilly lace over Elodie Mikado
- Two-piece bodice with corset boning and peplum accents at the hips
- Strapless cat eye neckline
- Lined with Kahili recycled content lining (100% recycled polyester)
- Zipper and inner shapewear corset closure with covered buttons trailing to the hem

### SIZES: 0-28

### SISTER STYLES

- Available in Elodie Mikado (Lassen Marie, 26MS453A02)

### PERSONALIZATION OPTIONS & PRICING

26SS453A01 (Zip-up)
26SS453B01 (Lace-up)

### ACCESSORIES PRICING

BDC26SS453000 (Chantilly lace over Elodie Mikado bodice, Zip-up)
BDE26SS453000 (Chantilly lace over Elodie Mikado bodice, Lace-up)
VL026SS453000 (Royal veil)
DT026SS453000 (Lassen Marie) (Train)

# SOTTERO<sup>AND</sup> MIDGLEY<sup>®</sup>



26SS453A02, IV  
Bodice: BDA26SS453000, IV/IV  
Size 6

Lassen Marie 26SS453A02





## Lassen Marie 26SS453A02

### COLORS

- All Ivory

### HIGHLIGHTS

- Elodie Mikado
- Two-piece bodice with corset boning and peplum accents at the hips
- Strapless cat eye neckline
- Lined with Kahili recycled content lining (100% recycled polyester)
- Zipper and inner shapewear corset closure with covered buttons trailing to the hem

### SIZES: 0-28

### SISTER STYLES

- Available in Chantilly lace (Lassen, 26MS453A01)

### PERSONALIZATION OPTIONS & PRICING

26SS453A02 (Zip-up)
26SS453B02 (Lace-up)

### ACCESSORIES PRICING

BDA26SS453000 (Sleeveless sheer bodice)
BDD26SS453000 (Elodie Mikado bodice, Zip-up)
BDF26SS453000 (Elodie Mikado bodice, Lace-up)
DS026SS453000 (Sleeves)
DT026SS453000 (Train)

# SOTTERO<sup>AND</sup> MIDGLEY<sup>®</sup>



26SK464A01, IV  
Veil: VL026SK464000, IV  
Size 6

Lovai 26SK464A01





## Lovai 26SK464A01

### COLORS

- All Ivory

### HIGHLIGHTS

- Yama stretch satin
- Modest high neck
- Fitted long sleeves with illusion lace cutout and double pearl button closure at the wrist
- Lined in Cleo stretch jersey for comfort
- Zipper closure with double pearl buttons trailing to the hem
- Extended illusion lace train

**SIZES:** 0-28

### PERSONALIZATION OPTIONS & PRICING

26SK464A01  
(Modest)

### ACCESSORIES PRICING

VL026SK464000  
(Royal veil)

# SOTTERO<sup>AND</sup> MIDGLEY<sup>®</sup>



26SK433A01, IV  
Veil: VL026SB433000, IV  
Size 6

Marceline 26SK433A01





26SK433A01, IV  
Size 6



26SK433A01, IV  
Veil: VL026SB433000, IV  
Size 6



26SK433A01, IV  
Size 6

## Marceline 26SK433A01

### COLORS

- All Ivory

### HIGHLIGHTS

- Beaded and sequined overlace over glitter tulle
- Cat eye neckline accented with pearl clusters
- Lined in Sorella satin
- Pearl button over zipper closure with inner shapewear corset and buttons trailing to hem

### SIZES: 0-28

### PERSONALIZATION OPTIONS & PRICING

26SK433A01

### ACCESSORIES PRICING

VL026SB433000  
(Cathedral veil)

# SOTTERO<sup>AND</sup> MIDGLEY<sup>®</sup>



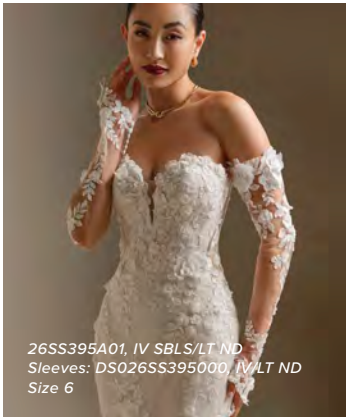
26SS395A01, IV SBLS/LT ND  
Cap-sleeves: CS026SS395000, IV/IV  
Veil: VL026SZ395000, IV  
Size 6

Rashida 26SS395A01





26SS395A01, IV SBLS/LT ND  
Size 6



26SS395A01, IV SBLS/LT ND  
Sleeves: DS026SS395000, IV/LT ND  
Size 6



26SS395A01, IV SBLS/LT ND  
Veil: VL026SZ395000, IV  
Size 6



26SS395A01, IV SBLS/LT ND  
Veil: VL026SZ395000, IV  
Size 6

## Rashida 26SS395A01

**COLORS**

- All Ivory gown with Ivory Illusion
- Ivory over Soft Blush gown with Light Nude Illusion
- Ivory over Soft Blush gown with Medium Nude Illusion

**HIGHLIGHTS**

- Beaded and sequin lace motifs over Chantilly lace and glitter tulle
- Lined front bodice with illusion lace hip dips
- Deep illusion V-neck
- Plunging illusion V-back with corset boning detail
- Lined with Jenday stretch jersey for comfort
- Covered button over zipper closure
- Extended illusion lace scalloped train

**SIZES:** 0-28

**PERSONALIZATION OPTIONS & PRICING**

26SS395A01 <i>(Unlined bodice, Chantilly lace and glitter tulle)</i>
26SS395A02 <i>(Unlined bodice, plain tulle and glitter tulle)</i>
26SS395B01 <i>(Fully lined bodice, Chantilly lace and glitter tulle)</i>
26SS395B02 <i>(Fully lined bodice, plain tulle and glitter tulle)</i>

**ACCESSORIES PRICING**

CS026SS395000 <i>(Cap-sleeves)</i>
DS026SS395000 <i>(Sleeves)</i>
VL026SZ395000 <i>(Cathedral veil)</i>

# SOTTERO<sup>AND</sup> MIDGLEY<sup>®</sup>

FEATURING  
**INNER  
CORSET**  
—  
SLENDERIZING  
FIT

26SS376A01, IV  
Veil: VL026SS376000, IV  
Size 6

Tamar 26SS376A01





## Tamar 26SS376A01

### COLORS

- All Ivory

### HIGHLIGHTS

- Unembellished allover lace
- Asymmetrically draped front bodice
- Strapless sweetheart neckline
- Lined with Rosario crepe back satin
- Zipper with inner corset closure and covered buttons trailing to the hem
- Kahili recycled content lining (100% recycled polyester) as the inner lining layer
- Pockets

**SIZES:** 0-28

### PERSONALIZATION OPTIONS & PRICING

26SS376A01
------------

### ACCESSORIES PRICING

CS026SS376000 (Cap-sleeves)
DS026SS376000 (Sleeves)
VL026SS376000 (Waltz veil)

# SOTTERO<sup>AND</sup> MIDGLEY<sup>®</sup>

CREATED WITH  
**LOWER  
IMPACT  
MATERIALS**

26SS473A01, DW  
Veil (Lassen): VL026SS453000, IV  
Size 6

Tokyo 26SS473A01





## Tokyo 26SS473A01

### COLORS

- All Diamond White

### HIGHLIGHTS

- O'Hara satin
- Exaggerated dropped waist with soft gathering
- Strapless soft scoop neckline
- Modesty panel on model altered to sit lower on the back
- Kahili recycled content lining (100% recycled polyester)
- Lace-up corset closure

SIZES: 0-28

### PERSONALIZATION OPTIONS & PRICING

26SS473A01 (Lace-up)
26SS473B01 (Zip-up)

### ACCESSORIES PRICING

DS026SS473000 (Sleeves)
VL026SS453000 (Lassen) (Royal veil)

# SOTTERO<sup>AND</sup> MIDGLEY<sup>®</sup>



26SS470A01, IV SLV SBLS/IV  
Cap-sleeves (Twilight): CS025SS330000, IV SLV  
Veil: VL026SS470000, IV SLV  
Size 6

Twilight Lane 26SS470A01





## Twilight Lane 26SS470A01

### COLORS

- Ivory gown with Light Nude Center Front Illusion
- Ivory/Silver Accent gown with Light Nude Center Front Illusion
- Ivory/Silver Accent over Soft Blush gown with Light Nude Center Front Illusion

### HIGHLIGHTS

- Beaded and sequin 3-D lace motifs over Chantilly lace and glitter tulle
- Sheer organza lined front bodice with corset boning detail
- Strapless sweetheart neckline with an illusion plunge
- Plunging illusion lace back
- Kahili recycled content lining (100% recycled polyester)
- Zipper with covered buttons trailing to the hem
- Pockets
- Thigh high slit

### SIZES: 0-28

### SISTER STYLES

- Available with a fit-and-flare lace skirt (Twilight, 25SS330A01)

### PERSONALIZATION OPTIONS & PRICING

26SS470A01 (Unlined bodice)
26SS470B01 (Lined front bodice)

### ACCESSORIES PRICING

VL026SS470000 (Cathedral veil)
CS025SS330000 (Twilight) (Cap-sleeves)

# SOTTERO<sup>AND</sup> MIDGLEY<sup>®</sup>



FEATURING  
**JERSEY  
LINING**

LIGHTWEIGHT  
AND  
COMFORTABLE

26SB409A01, IV SPL/LT ND  
Size 6

West 26SB409A01





West 26SB409A01

COLORS

- All Ivory gown with Ivory Illusion
- Ivory over Soft Pearl gown with Light Nude Illusion
- Ivory over Soft Pearl gown with Medium Nude Illusion

HIGHLIGHTS

- Beaded and sequin lace motifs over Chantilly lace
- Illusion lace bodice with basque waist and exposed boning detail
- Deep illusion V-neckline
- Beaded and sequin lace spaghetti straps
- Lined in Lorena stretch jersey for comfort
- Zipper closure with covered buttons trailing to hem
- Extended beaded and sequin illusion lace train
- Slit

SIZES: 0-28

PERSONALIZATION OPTIONS & PRICING

26SB409A01 (Unlined bodice, Slit, Chantilly lace)
26SB409A02 (Unlined bodice, Slit, Glitter tulle 3)
26SB409A11 (Unlined bodice, No Slit, Chantilly lace)
26SB409A12 (Unlined bodice, No Slit, Glitter tulle 3)
26SB409B01 (Lined front bodice, Slit, Chantilly lace)
26SB409B02 (Lined front bodice, Slit, Glitter tulle 3)
26SB409B11 (Lined front bodice, No Slit, Chantilly lace)
26SB409B12 (Lined front bodice, No Slit, Glitter tulle 3)

ACCESSORIES PRICING

VL026SB409000 (Cathedral veil)
-----------------------------------

# SOTTERO<sup>AND</sup> MIDGLEY<sup>®</sup>



26SS471A01, IV/IV  
Cap-sleeves: CS026SS471000, IV/IV  
Veil: VL026SS471000, IV  
Size 6

Zulani 26SS471A01





Zulani 26SS471A01

COLORS

- All Ivory gown with Ivory Illusion

HIGHLIGHTS

- Beaded and sequin lace motifs over Chantilly lace and glitter tulle
- Illusion lace front bodice with corset boning detail and an exaggerated basque waistline
- Strapless sweetheart neckline with an illusion plunge
- Illusion lace back bodice with exaggerated basque waistline
- Kahili recycled content lining (100% recycled polyester)
- Zipper closure with covered buttons trailing to the hem
- Pockets
- Horsehair hem
- Extended sheer lace train

SIZES: 0-28

PERSONALIZATION OPTIONS & PRICING

26SS471A01 (Unlined bodice)
26SS471B01 (Fully lined bodice)

ACCESSORIES PRICING

CS026SS471000 (Cap-sleeves)
VL026SS471000 (Royal veil)



Gowns available for quick weddings! For your convenience, Quick Ship stickers are available to place on your samples to identify gowns available in the Quick Ship program! Ask your Sales Representative for more details or download and print our quick ship delivery tags located on the Retailer Portal.



ABERDEEN\*  
25SW349A01



ABERDEEN VIDA\*  
25SW349A02



ASPEN\*  
23SZ044A01



BRONSON\*  
23SC046A01



CONSTANCE  
25SS348A01



GISELLE\*  
24SS830A01



HALLE  
25SS934A01



JOVIENNE  
25SZ884A01



NARISSA  
25SB354A01



TANICA  
24SB190A01



TWILIGHT  
25SS330A01



WICKLOW\*  
24SS834A01

\*Ideal for CURVY brides

NOTE: Personalizations and Special lengths do not apply. Effective July 1, 2025. Extended deliveries may apply during Chinese holidays.