



Rebecca Ingram™

Spring 2026

COLLECTION

Rebecca Ingram™



26RK422A01, IV
Size 6

Alexia 26RK422A01



Alexia 26RK422A01

COLORS

- All Ivory

HIGHLIGHTS

- Jollie satin
- Jollie satin bodice with exposed boning detail and curved basque waist
- Sweetheart neckline
- Detachable 3/4" wide Jollie satin straps included
- Lined with Kahili recycled content lining (100% recycled polyester)
- Zipper closure with covered buttons trailing to the hem
- Mock two-piece
- Pockets

SIZES: 0-28

PERSONALIZATION OPTIONS & PRICING

26RK422A01

Rebecca Ingram™



FEATURING
**JERSEY
LINING**

LIGHTWEIGHT
AND
COMFORTABLE

26RN461A01, IV/IV
Size 6

Aubra 26RN461A01



Aubra 26RN461A01

COLORS

- All Ivory gown with Ivory Illusion

HIGHLIGHTS

- Beaded lace motifs over tulle
- Lined sweetheart bodice
- Plunging illusion neckline
- Keyhole back
- Long illusion lace fitted sleeves with covered buttons at the wrist
- Lined in Kitron stretch jersey for comfort
- Covered button over zipper closure
- Extended illusion train accented with lace

SIZES: 0-28

PERSONALIZATION OPTIONS & PRICING

26RN461A01

ACCESSORIES PRICING

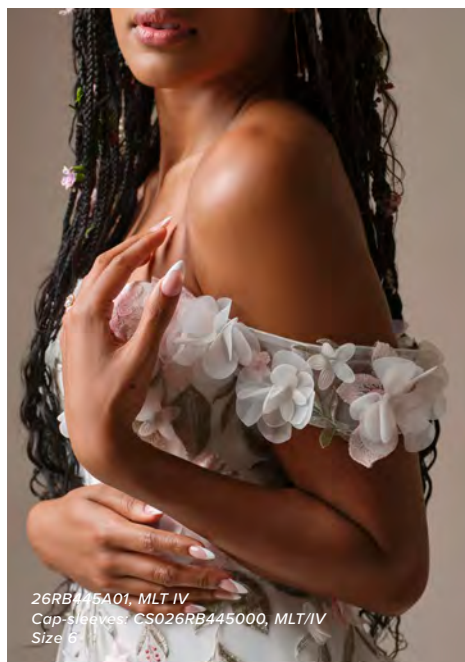
OSBEEEXK007000
(Overskirt, Sparkle tulle)

Rebecca Ingram™



26RB445A01, MLT IV
Size 6

Blossom 26RB445A01



Blossom 26RB445A01

COLORS

- All Ivory
- Multi over Ivory

HIGHLIGHTS

- Unembellished lace motifs with 3-D flowers over tulle
- Strapless soft scoop neckline
- Lined in Rosario crepe back satin
- Covered buttons over zipper and inner elastic closure

SIZES: 0-28

PERSONALIZATION OPTIONS & PRICING

26RB445A01

ACCESSORIES PRICING

CS026RB445000
(Cap-sleeves)

VL026RB445000
(Cathedral veil)

Rebecca Ingram™



FEATURING
**JERSEY
LINING**
LIGHTWEIGHT
AND
COMFORTABLE

26RB438A01, IV
Size 6

Brenda 26RB438A01



Brenda 26RB438A01

COLORS

- All Ivory

HIGHLIGHTS

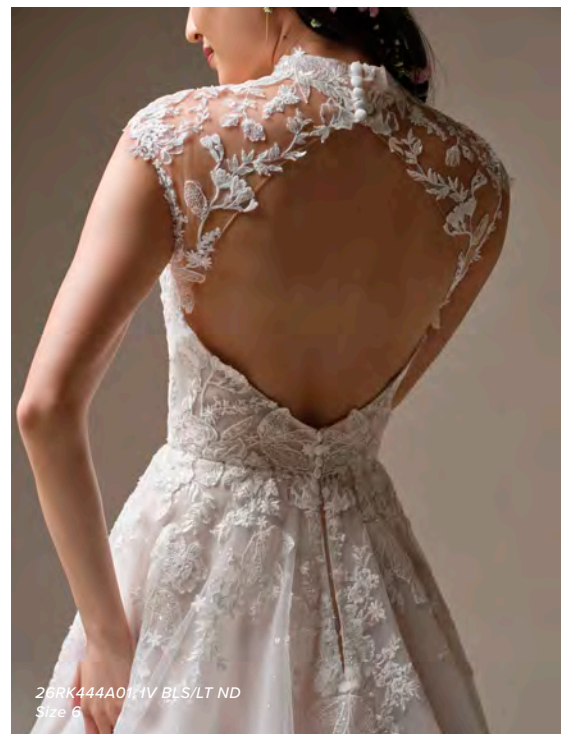
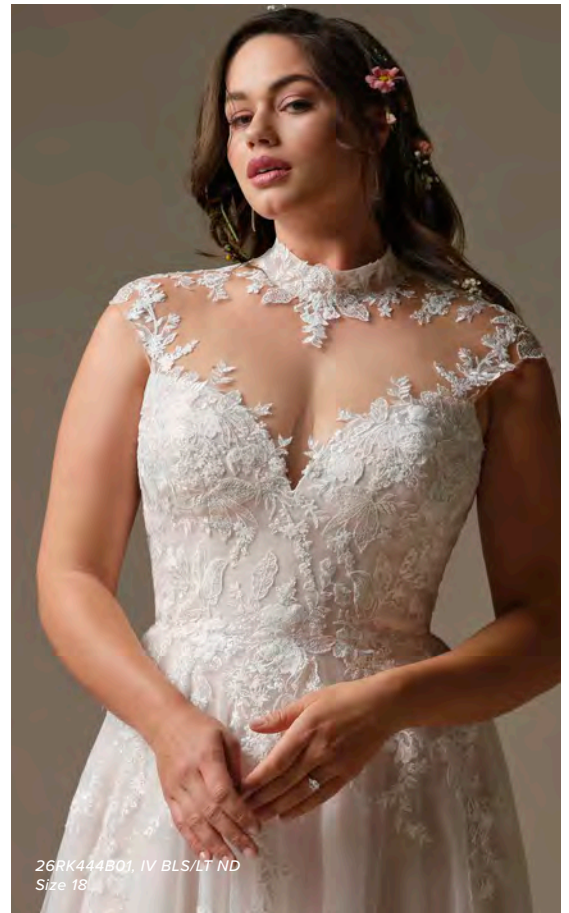
- Talin stretch crepe
- Draped cowl neckline
- Deep scooping V-back with detachable cowl detail included
- Talin stretch crepe spaghetti straps
- Lined in Talin stretch crepe
- Covered buttons over zipper closure

SIZES: 0-28

PERSONALIZATION OPTIONS & PRICING

26RB438A01

Rebecca Ingram™



Cody 26RK444A01



Cody 26RK444A01

COLORS

- All Ivory gown with Ivory Illusion
- Ivory over Blush gown with Light Nude Illusion
- Ivory over Blush gown with Medium Nude Illusion

HIGHLIGHTS

- Sequined lace over sequin tulle
- Sheer sequined lace bodice
- Mock illusion turtleneck
- Illusion keyhole back
- Illusion lace cap-sleeves
- Lined with Kahili recycled content lining (100% recycled polyester) in All Ivory colorway only
- Covered button over zipper closure

SIZES: 0-28

PERSONALIZATION OPTIONS & PRICING

26RK444A01 (Unlined bodice)
26RK444B01 (Lined sweetheart bodice)

Rebecca Ingram™



26RK443A01, IV
Shoulder wrap: SW026RK443000, IV
Size 6

Dezi 26RK443A01



Dezi 26RK443A01

COLORS

- All Ivory

HIGHLIGHTS

- Marquise organza
- Asymmetrically pleated Marquise organza bodice
- Strapless cat eye neckline
- Lined in Sorella satin
- Zipper and inner elastic closure with covered buttons trailing to hem
- Pockets

SIZES: 0-28

PERSONALIZATION OPTIONS & PRICING

26RK443A01

ACCESSORIES PRICING

SW026RK443000
(Shoulder wrap)

Rebecca Ingram™



26RK429A01, IV BLS/IV
Size 6

Eden 26RK429A01



Eden 26RK429A01

COLORS

- All Ivory gown with Ivory Illusion
- Ivory over Blush gown with Ivory Illusion

HIGHLIGHTS

- Beaded and sequined lace over sparkle tulle
- Illusion beaded and sequined lace bodice with basque waist
- Scoop neckline
- Beaded spaghetti straps
- Lined in Sorella satin
- Covered button over zipper closure
- Extended illusion beaded and sequined lace train

SIZES: 0-28

PERSONALIZATION OPTIONS & PRICING

26RK429A01 (Unlined bodice, Sparkle tulle)
26RK429A02 (Unlined bodice, Plain tulle)
26RK429B01 (Lined front bodice, Sparkle tulle)
26RK429B02 (Lined front bodice, Plain tulle)

ACCESSORIES PRICING

DTA26RK429000 (Train, Sparkle tulle)
DTB26RK429000 (Train, Plain tulle)

Rebecca Ingram™



26RK478A01, IV BLS/IV
Size 6

Esmeralda 26RK478A01



Esmeralda 26RK478A01

COLORS

- All Ivory gown with Ivory Illusion
- Ivory over Blush gown with Ivory Illusion

HIGHLIGHTS

- Corded lace motifs over Chantilly lace and sequin tulle
- Illusion lace bodice with exposed boning and basque waist detail
- Sweetheart neckline
- Attached lace spaghetti straps
- Lined with Kahili recycled content lining (100% recycled polyester) in All Ivory colorway only
- Covered button over zipper closure
- Pockets

SIZES: 0-28

PERSONALIZATION OPTIONS & PRICING

26RK478A01 (Unlined bodice)

26RK478B01 (Lined front bodice)

ACCESSORIES PRICING

DS026RK478000 (Sleeves)

Rebecca Ingram™



26RS466A01, IV
Size 6

Georgina 26RS466A01



Georgina 26RS466A01

COLORS

- All Ivory

HIGHLIGHTS

- Aurora chiffon
- Lyric Mikado bodice with a soft basque waist
- Strapless cat eye neckline
- Lined with Jenday stretch jersey for comfort
- Zipper and inner elastic closure with covered buttons trailing to the hem
- Kahili recycled content lining (100% recycled polyester) as the bodice lining
- Side slit

SIZES: 0-28

PERSONALIZATION OPTIONS & PRICING

26RS466A01

ACCESSORIES PRICING

DS026RS466000 (Sleeves)

JK026RS466000 (Jacket)

Rebecca Ingram™



FEATURING
**JERSEY
LINING**
—
LIGHTWEIGHT
AND
COMFORTABLE

26RB399A01, IV/IV
Size 6

Holly 26RB399A01



26RB399A01, IV/IV
Overskirt: OS026RB399000, IV
Size 6



26RB399A01, IV/IV
Overskirt: OS026RB399000, IV
Size 6



26RB399A01, IV/IV
Size 6

Holly 26RB399A01

COLORS

- All Ivory gown with Ivory Illusion

HIGHLIGHTS

- Future stretch crepe
- Beaded and sequin lace motif illusion bodice
- Deep V-neckline with crisscross tulle detail
- Deep illusion V-back
- Tulle illusion tank straps
- Lined in Lorena stretch jersey for comfort
- Covered buttons over zipper closure

SIZES: 0-28

PERSONALIZATION OPTIONS & PRICING

26RB399A01 (Unlined bodice)

26RB399B01 (Lined front bodice)

ACCESSORIES PRICING

OS026RB399000 (Overskirt)

Rebecca Ingram™



26RB437A01, IV/IV
Size 6

Kendall 26RB437A01



Kendall 26RB437A01

COLORS

- All Ivory gown with Ivory Illusion

HIGHLIGHTS

- Printed organza
- Illusion bodice with exposed boning detail and basque waist
- Cat eye neckline
- Lined in Rosario crepe back satin
- Covered buttons over zipper closure

SIZES: 0-28

PERSONALIZATION OPTIONS & PRICING

26RB437A01 (Unlined bodice)

26RB437B01 (Lined front bodice)

Rebecca Ingram™



FEATURING
**JERSEY
LINING**
—
LIGHTWEIGHT
AND
COMFORTABLE

26RK407A01, IV/IV
Size 6

Larissa Leigh 26RK407A01



Larissa Leigh 26RK407A01

COLORS

- All Ivory gown with Ivory Illusion

HIGHLIGHTS

- Sherwood crepe
- Unembellished lace
- Modest square front neckline
- Modest square back neckline
- Long fitted illusion lace sleeves with covered button closure at the wrist
- Lined in Virtue stretch jersey for comfort
- Zipper closure with covered buttons trailing to the hem
- Detachable inner modest cap-sleeves included
- Extended illusion lace train

SIZES: 0-28

SISTER STYLES

- Available with illusion lace tank straps and a plunging V-neckline with beaded and sequined embellished lace (Larissa, 25RK936A01)

PERSONALIZATION OPTIONS & PRICING

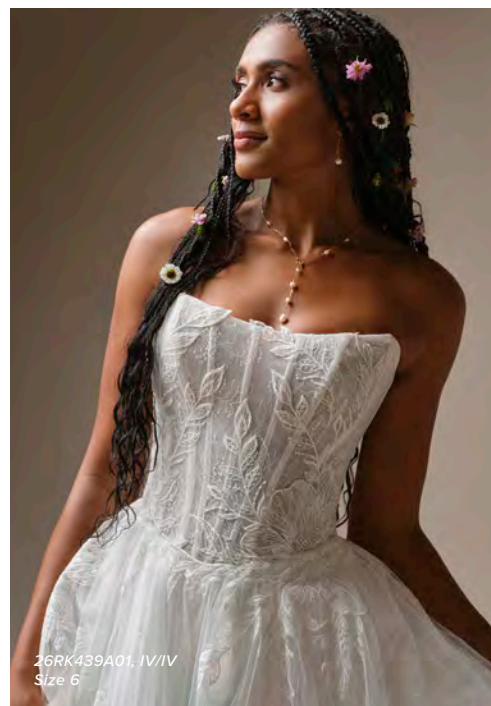
26RK407A01
(Modest)

Rebecca Ingram™



26RK439A01, IV/IV
Size 6

Lisa 26RK439A01



Lisa 26RK439A01

COLORS

- All Ivory gown with Ivory Illusion

HIGHLIGHTS

- Sequined motifs over Chantilly lace
- Illusion sequined motifs over Chantilly lace bodice with exposed boning detail and soft basque waist
- Cat eye neckline
- Lined with Kahili recycled content lining (100% recycled polyester)
- Covered button over zipper closure

SIZES: 0-28

PERSONALIZATION OPTIONS & PRICING

26RK439A01 (Unlined bodice)
26RK439B01 (Fully lined bodice)

Rebecca Ingram™



26RK386A01, IV
Size 6

Lucille 26RK386A01



Lucille 26RK386A01

COLORS

- All Ivory

HIGHLIGHTS

- Yama stretch satin
- Soft scoop neckline
- Soft V-back neckline
- Yama stretch satin tank straps
- Lined in Virtue stretch jersey for comfort
- Zipper closure with covered buttons trailing to the hem

SIZES: 0-28

PERSONALIZATION OPTIONS & PRICING

26RK386A01 (Sleeveless)
26RK386A11 (Illusion lace sleeves)

Rebecca Ingram™



26RN452A01, IV/IV
Size 6

Marty 26RN452A01



Marty 26RN452A01

COLORS

- All Ivory gown with Ivory Illusion

HIGHLIGHTS

- Delustered satin
- Illusion bodice with exposed boning detail and pearl accents
- Plunging sweetheart neckline
- Lined with Kahili recycled content lining (100% recycled polyester)
- Zipper closure with covered buttons trailing to the hem
- Pockets

SIZES: 0-28

PERSONALIZATION OPTIONS & PRICING

26RN452A01 (Unlined bodice)

26RN452B01 (Lined front bodice)

Rebecca Ingram™



Miley 26RS440A01



Miley 26RS440A01

COLORS

- All Ivory

HIGHLIGHTS

- Delustered satin
- Sequined lace motifs accent the bodice and hem
- Off-the-shoulder portrait neckline
- Off-the-shoulder Delustered satin and lace sleeves with snap closure on the back neckline
- Lined with Kahili recycled content lining (100% recycled polyester)
- Zipper with inner elastic closure and covered buttons trailing to the hem

SIZES: 0-28

PERSONALIZATION OPTIONS & PRICING

26RS440A01

Rebecca Ingram™



26RS436A01, IV SLV/IV
Size 6

Nora 26RS436A01



Nora 26RS436A01

COLORS

- Ivory/Silver Accent gown with Ivory Illusion
- Ivory/Silver Accent over Misty Mauve gown with Ivory Illusion

HIGHLIGHTS

- Beaded and sequin 3-D lace over glitter tulle
- Sheer organza lined bodice
- Strapless sweetheart neckline with an illusion plunge
- Deep sheer lace V-back
- Covered button over zipper closure
- Side slit

SIZES: 0-28

PERSONALIZATION OPTIONS & PRICING

26RS436A01 (Unlined bodice)

26RS436B01 (Fully lined bodice)

Rebecca Ingram™



FEATURING
**JERSEY
LINING**
—
LIGHTWEIGHT
AND
COMFORTABLE

26RN415A01, IV/IV
Size 6

Pearline 26RN415A01



Pearline 26RN415A01

COLORS

- All Ivory gown with Ivory Illusion

HIGHLIGHTS

- Unembellished lace motifs over tulle
- Illusion bodice with exposed boning detail and lace motifs
- Plunging illusion square neckline
- V-back
- Lace tank straps
- Lined in Kitron stretch jersey for comfort
- Covered button over zipper closure
- Extended illusion train accented with lace
- All boning measures 1/4" wide for all sizes

SIZES: 0-28

PERSONALIZATION OPTIONS & PRICING

26RN415A01 (Unlined bodice)

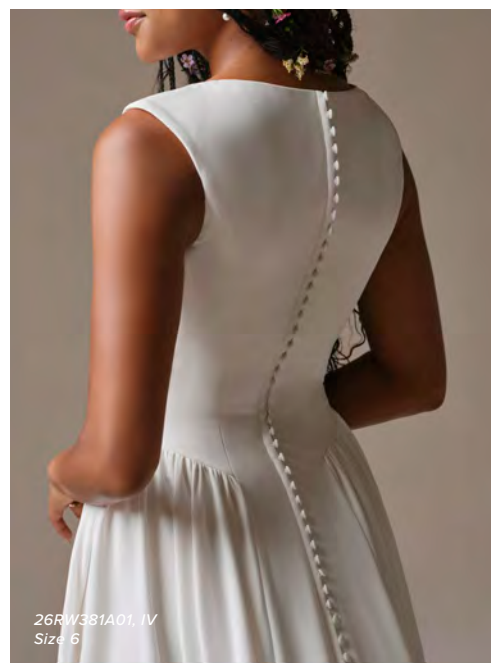
26RN415B01 (Fully lined bodice)

Rebecca Ingram™



26RW381A01, IV
Size 6

Shay 26RW381A01



Shay 26RW381A01

COLORS

- All Ivory

HIGHLIGHTS

- Talin stretch crepe
- Modest bateau neckline
- Modest cap-sleeves
- Lined with Donella crepe
- Zipper closure with covered buttons trailing to the hem

SIZES: 0-28

PERSONALIZATION OPTIONS & PRICING

26RW381A01
(Modest)

Rebecca Ingram™



26RN421A01, IV/IV
Veil: VLBEXK004000, IV
Size 6

Susan 26RN421A01



Susan 26RN421A01

COLORS

- All Ivory gown with Ivory Illusion

HIGHLIGHTS

- Beaded and sequined lace motifs over tulle
- Illusion bodice with exposed boning detail and lace motifs
- Sweetheart neckline
- V-back
- Beaded and sequined lace tank straps
- Lined with Kahili recycled content lining (100% recycled polyester)
- Covered button over zipper closure
- Side slit
- All boning measures 1/4" wide for all sizes

SIZES: 0-28

PERSONALIZATION OPTIONS & PRICING

26RN421A01 (Unlined bodice, Slit)

26RN421A11 (Unlined bodice, No slit)

26RN421B01 (Fully lined bodice, Slit)
--

26RN421B11 (Fully lined bodice, No slit)

ACCESSORIES PRICING

VLBEEXK004000 (Fingertip veil)

Rebecca Ingram™

FEATURING
**JERSEY
LINING**
—
LIGHTWEIGHT
AND
COMFORTABLE

26RK441A01, IV
Size 6

Terry 26RK441A01



Terry 26RK441A01

COLORS

- All Ivory

HIGHLIGHTS

- Solstice crepe
- Beaded and sequined lace motifs over Solstice crepe with wrapped boning detail and basque waist
- Straight neckline
- Lined in Vlada stretch jersey for comfort
- Covered button over zipper closure with inner elastic and buttons trailing to hem
- Mock two-piece
- Lace illusion slit

SIZES: 0-28

PERSONALIZATION OPTIONS & PRICING

26RK441A01

Rebecca Ingram™



26RK411A01, IV/IV
Veil: VL026RK411000, IV
Size 6

Valarie 26RK411A01



Valarie 26RK411A01

COLORS

- Ivory gown with Ivory Illusion

HIGHLIGHTS

- Beaded and sequined lace over sparkle tulle
- Illusion beaded and sequined lace bodice with basque waist
- Plunging illusion V-neckline
- Deep V-back
- Beaded and sequined spaghetti straps
- Lined with Kahili recycled content lining (100% recycled polyester)
- Covered button over zipper closure
- Inner side slit

SIZES: 0-28

PERSONALIZATION OPTIONS & PRICING

26RK411A01 (Unlined bodice)
26RK411B01 (Lined front bodice)

ACCESSORIES PRICING

VL026RK411000 (Cathedral veil)

Rebecca Ingram™



26RN417A01, IV
Sleeves: DS026RN417000, IV
Size 6

Zorina 26RN417A01



Zorina 26RN417A01

COLORS

- All Ivory

HIGHLIGHTS

- Felicity Mikado
- Basque waistline with exposed boning detail
- Lace trim accents sweetheart neckline
- Lined with Kahili recycled content lining (100% recycled polyester)
- Zipper closure with inner elastic and covered buttons trailing to the hem
- Pockets
- Side slit

SIZES: 0-28

PERSONALIZATION OPTIONS & PRICING

26RN417A01

ACCESSORIES PRICING

CS026RN417000 (Cap-sleeves)
DS026RN417000 (Sleeves)



Gowns available for quick weddings! For your convenience, Quick Ship stickers are available to place on your samples to identify gowns available in the Quick Ship program! Ask your Sales Representative for more details or download and print our quick ship delivery tags located on the Retailer Portal.



ADELINE
25RK278A01



ALEXANDRIA*
23RS061A01



BROOKE*
25RW846A01



CANDICE
25RS918A01



CATHERINE*
24RS791A01



ELIZABETH MARIE*
24RS792A02



FRANCINE
23RB645A01



KAILANI
25RB343A01



RUBY*
24RS186A01